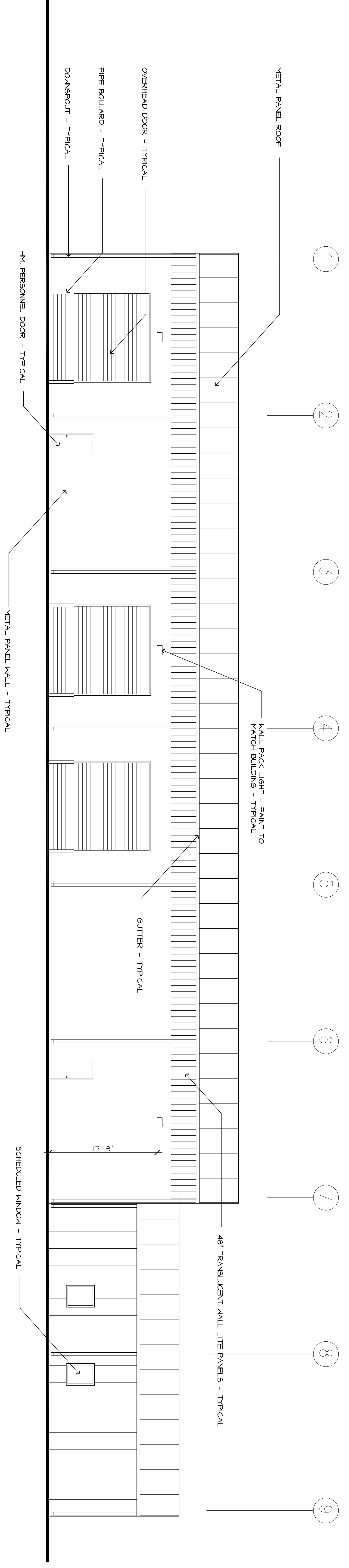


NORTH ELEVATION

1/8" = 1'-0" 4



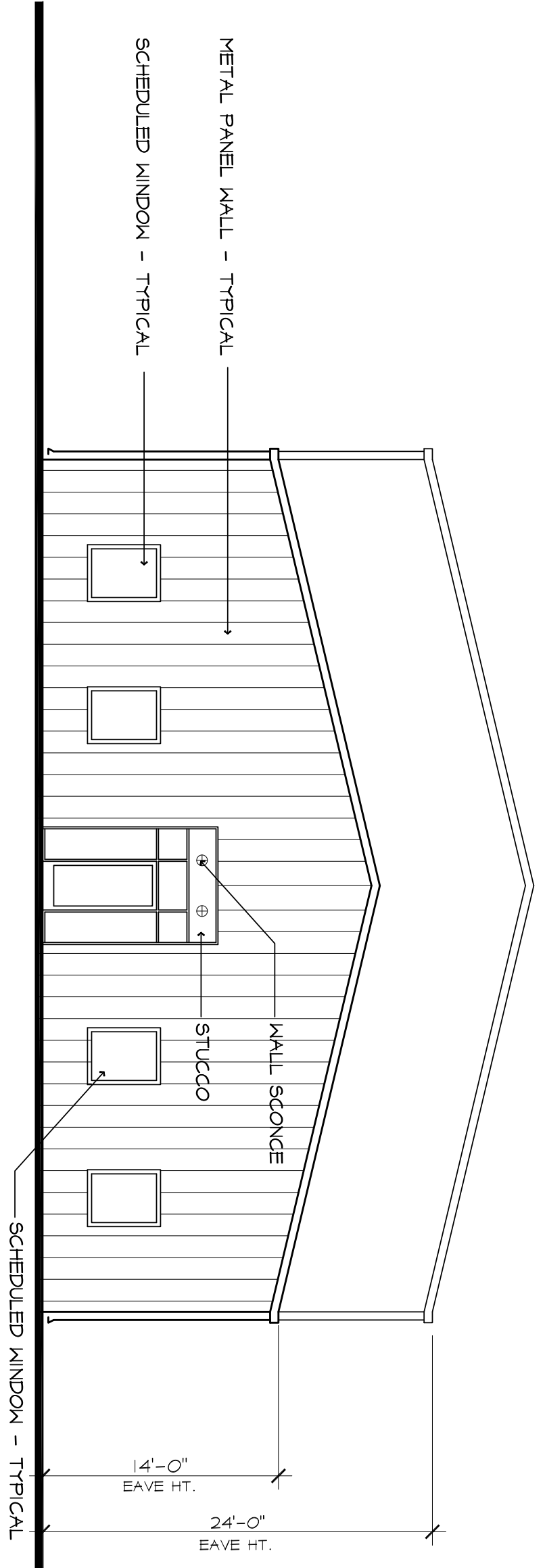
SOUTH ELEVATION

1/8" = 1'-0" 3

GLAZING NOTES

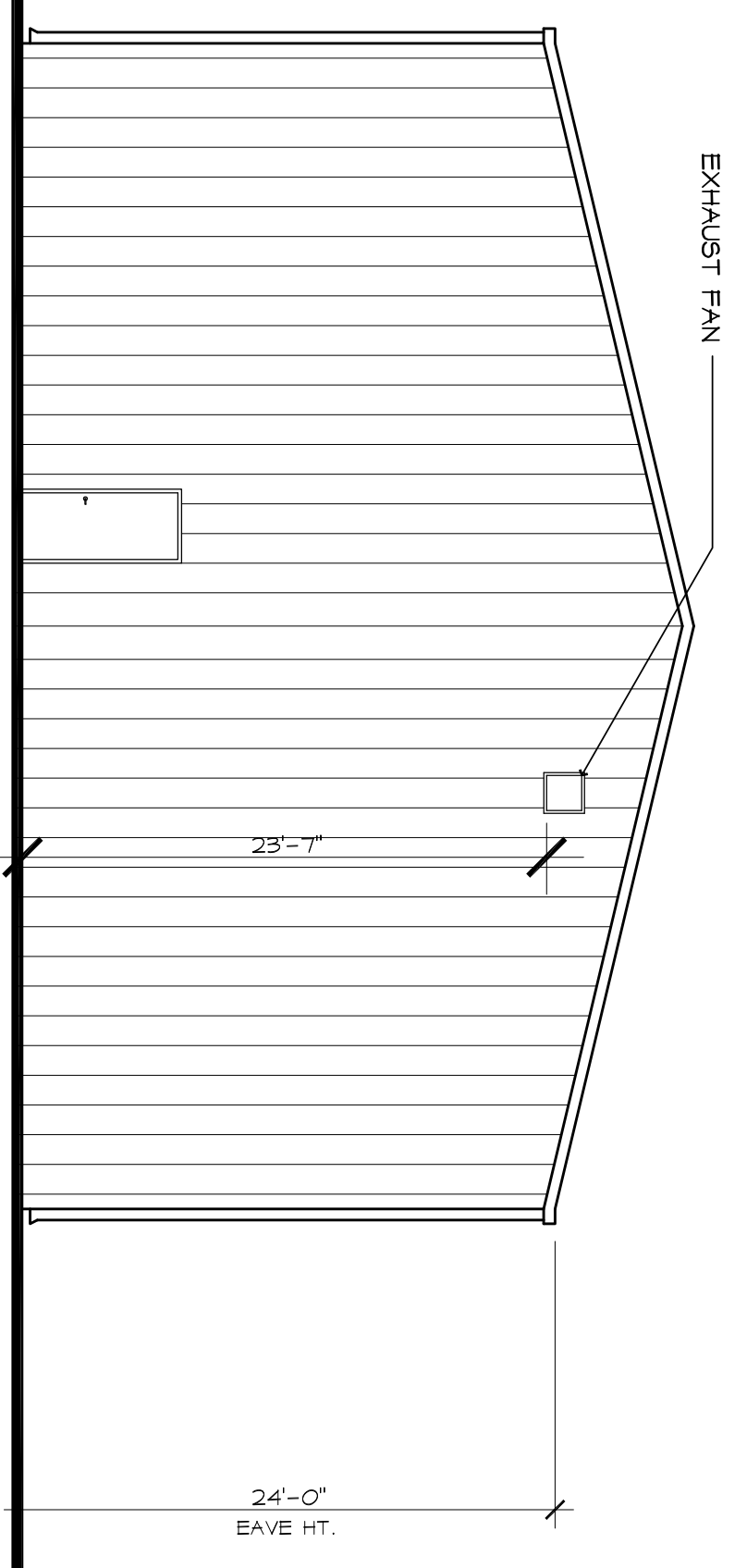
GLAZING IN ALL HAZARDOUS LOCATIONS SHALL COMPLY WITH IBC SECTION 7006. STORMWIND GLASS DOORS AND ADJACENT GLASS PANELS SHALL BE SAFETY/IMPACT RESISTANT GLASS.

U-FACTOR FOR DOOR AND WINDOW ASSEMBLY = 1.09
 VISIBLE LIGHT TRANSMITTANCE = 44%
 SHADING COEFFICIENT = 70%
 SHGC = .80



EAST ELEVATION

1/8" = 1'-0" 2



WEST ELEVATION

1/8" = 1'-0" 1